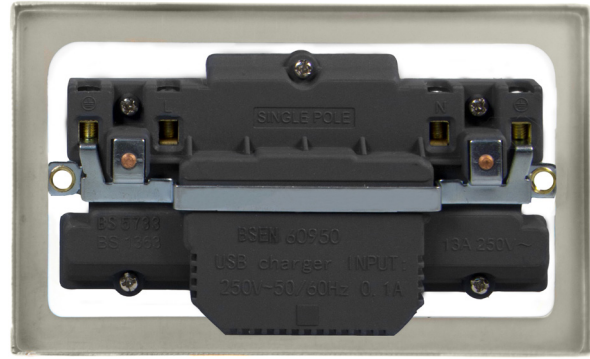


# Technical Specification

**Product Code:** VPSB570WH

**Description:** 13A Ingot 2 Gang Switched Socket Outlet With Single 2.1A USB Outlet



## General Information

<b>Dimensions</b>	146mm (W) x 88mm (H) x 8mm (D)
<b>Dimensions With Gasket</b>	149mm (W) x 91mm (H) x 9mm (D)
<b>Plate Design &amp; Finish</b>	Victorian Satin Brass
<b>Insert &amp; Gasket Colour</b>	White
<b>Materials</b>	Front Plate: Stainless Steel, Insert: Urea Housing: Nylon, Switch Cover: Stainless Steel Terminals: Brass, Terminal Screws: Steel & Yellow Passivated Contacts: Silver "on-lay" Copper / Brass, Internal Busbars: Formed Pressed Brass PCB: Mixed Components, Earth Strap: Mild Steel
<b>Maximum Voltage</b>	250V~ 50Hz
<b>Load Rating</b>	13A
<b>Plate Fixing Centres</b>	120.6mm
<b>Terminal Size</b>	5mmø
<b>Terminal Torque</b>	1.2Nm
<b>Terminal Capacity</b>	4 x 2.5mm <sup>2</sup> or 2 x 4mm <sup>2</sup>
<b>Single Pole</b>	Yes
<b>Twin Earth Terminals</b>	Yes
<b>USB Charging Output Total</b>	5V DC, 2.1A
<b>Number Of USB Outputs</b>	1
<b>USB Type</b>	USB Type "A"
<b>USB Standby Current</b>	2mA
<b>Product Markings</b>	USB 5V 2.1A
<b>Ingress Protection</b>	IP20
<b>Back Box Depth</b>	25mm Minimum
<b>Termination Type</b>	Screw
<b>Operational Temperature</b>	-5°C to +40°C
<b>Warranty</b>	10 Years, 1 Year Electronics
<b>Standards</b>	BS 1363-2: 2016 +A1: 2018 BS EN 62368-1: 2014, BS EN 62680-1-1: 2015

## Additional Information

Ensure that the mains supply is isolated before commencing installation and refer to the circuit diagram with the relevant product.  
Bare earth cables must always be covered with appropriate sleeving and wired to the earth terminal.

UK Design Registration: 3015621